



County Lines – what can SHAL do?





Sometimes we receive reports from a neighbour that unusual activity is taking place at an address.





Sometimes we receive reports from the police, schools or other agencies and they ask us to visit a home to find out what is happening.



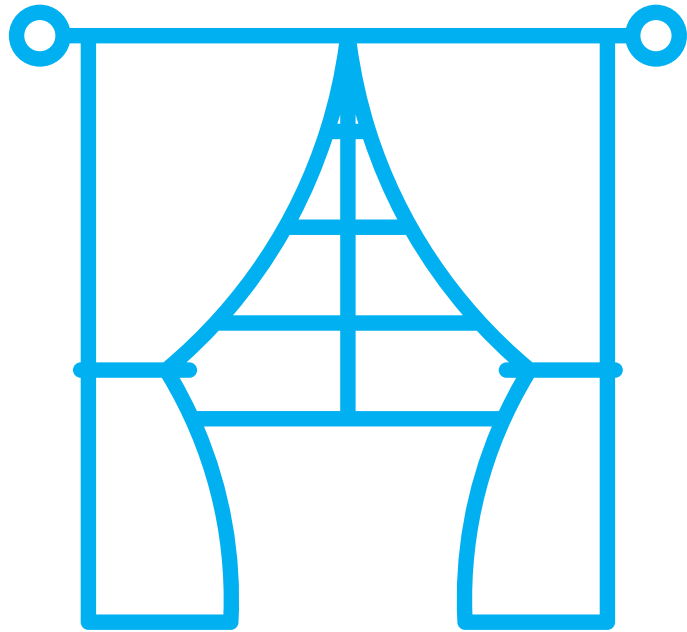


There are some signs we look out for which could highlight an issue with County Lines activity taking place.





Increased activity at the address
(more people coming and going
and anti-social behaviour).



Curtains drawn all the time,
tenant not seen for some time or
general lack of engagement.



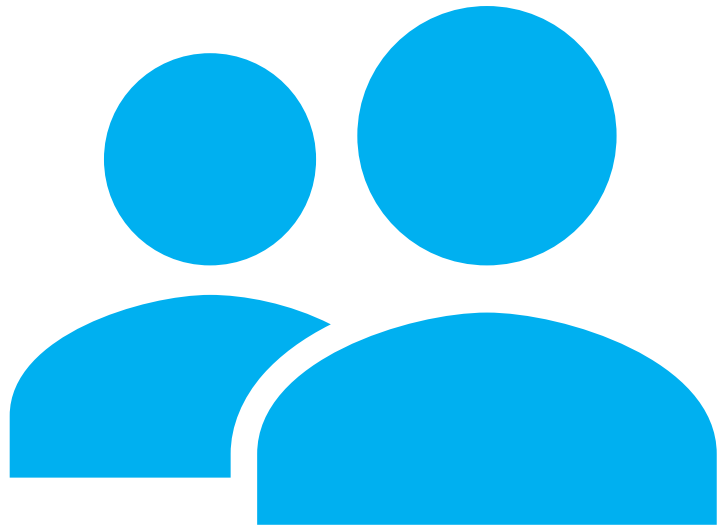
Taxis or other vehicles coming and going frequently.

Lots of takeaway boxes in the recycling.



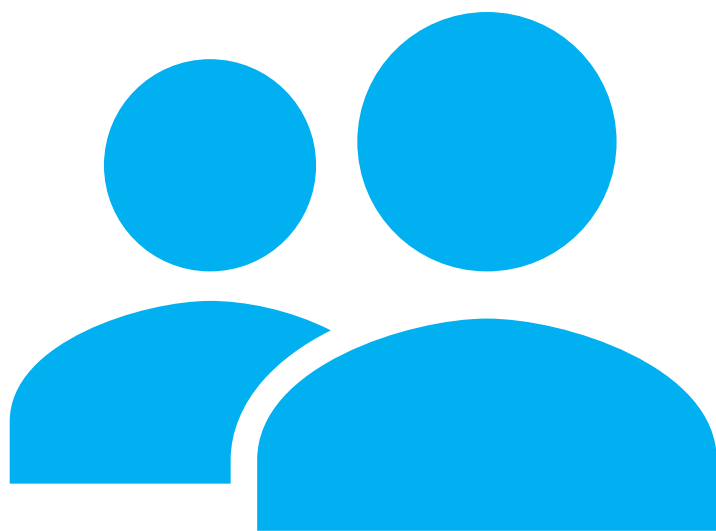
Rent arrears or large credits on rent accounts.





When we receive reports like this we always complete an initial visit with the police.

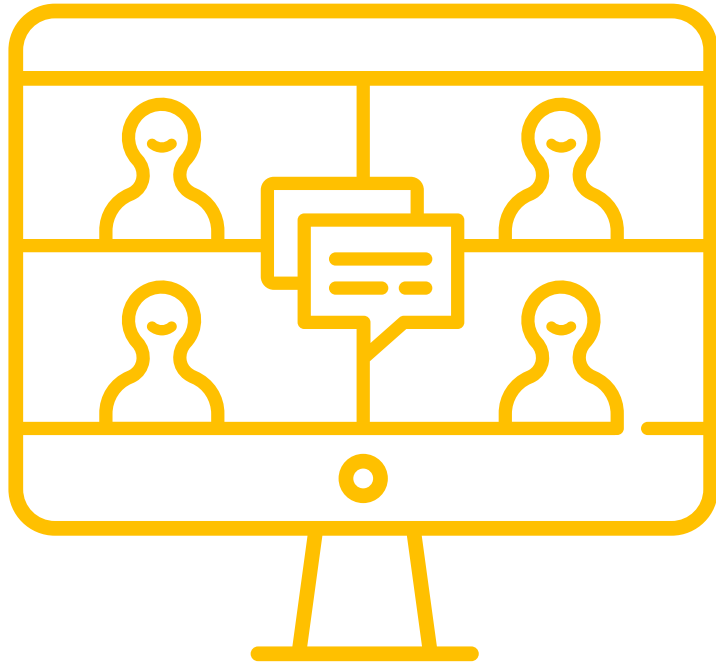
We'll offer support and guidance based on what has been reported.



We make the reason for the visit explicit as it's the first opportunity for them to disclose what's happening and get support.



This support can come from SHAL or the police and could include things like additional security or advice around moving home.



We work closely with various agencies including police, Hidden Voices, Adults and Children's Services, Together Teams (including schools where necessary) and Nelson Trust.



If you've got concerns please get in touch.





01278 444344



Send **“TEXT”** to 07984 355553



information@shal.org



www.shal.org



[@shalhousing](https://www.facebook.com/shalhousing)

We're proud to provide safe, warm and affordable homes in our community.

